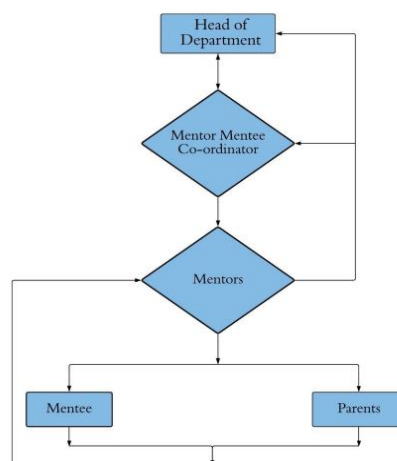


Specific facilities provided for women in terms of: a. Safety and security b. Counselling c. Common Rooms d. Day care center for young children e. Any other relevant information

1. Safety and Security The safety and security is the main concern at every public place. To consider the importance of it, Theem College of Engineering has taken proper action to keep the campus well secured and safe. The institute has 63 CCTV at different locations in the campus for monitoring the whole campus. The surveillance is watched through monitoring TVs at different offices that ensures 24 hours safe and secure campus for all. The CCTV cameras have backup data of forty-five days and its hard disk storage capacity is 8 TB. In addition to that, there is a team of security-guards work 24 x 7 around the campus and they keep records up of visitors by maintaining in and out registers. The institute provides a well-secured bus transport facility to all students and staff plying from Boisar city and railway station to the college. The institute is also installed Fire Extinguishers at different locations which could be easy to operate at the time of fire accident. The details of fire extinguishers are 3 numbers of 5kgs and 9 numbers of 4kgs in degree building. The institution also has “Women Empowerment and Grievance Redressal Cell (WEGRC/ICC),” “Anti-ragging Committee”, and “Anti-ragging Squad” which are looking after the staff and student’s cases. Department of Police, district Palghar, conducted a joint venture activity on “Cyber-Crime” and provision of the emergency call for safety.

2. Counselling is one of the most important steps to nurture students’ academic and technical related activities. The first-year students of Engineering College are totally new to these technical studies compare with their previous studies so they need proper guidance from experts to keep them up in this technical field. Theem College of Engineering systematically follows the counselling to give professional advice to students about the technical studies and practices, and the problem which they are going to face while practicing technical matters. To manage this, the institute formed a Mentor-Mentee System. The Mentor-Mentee System monitors the development of student’s performance in academics and it offers proper guidance to the slow learners for improving their performance if required. It maintains department wise mentor-mentee ratio 1:20 with the provision of proper remedial and tutorial classes. The department mentor-mentee coordinator maintains each mentor and their mentees data and reports to the HOD. They arrange parent/guardian meeting for any poor performance of students if required. In case of urgency, mentees are allowed to meet the mentor individually even after the class hours and the meeting remain confidential on the basis of student’s demands.



Flow Chart of Mentor Mentee System

3. **Common Room** The institute has separate common rooms for both boys and girls with an adequate facility that makes students comfortable while using it and they are free to give a suggestion. The management gives a proper response to the suggestions. For physically challenged students, special types of facilities are arranged as per their convenience. The facility of sanitary napkin vending machines are provided at ladies room.



Boys Common Room.



Girls Common Room.